

LEVEL 2 Mini-GAP Training Course

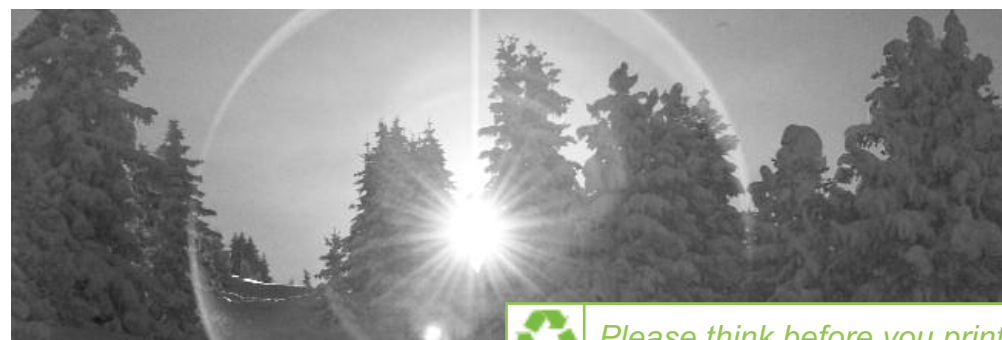
Tignes/Courchevel

19th November - 17th December 2011

Courses run by:



Official BASI Training Centre



Please think before you print



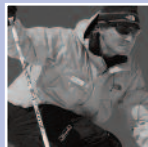
New Generation's Coaches

New Generation was set up by myself (Tom) and 3 British trainers (Warren, Ali and Richard) in 1998. Since then we have recruited some of the best British coaches to work alongside us and help to train the future personalities of British ski instruction. In 2009 we had over 15 BASI trainers and instructors working with New Generation. I guarantee that when you join one of our courses you will be trained by some of the best.



Tom Saxlund

ISTD (Level 4) and BASI Trainer, Managing Director and owner of New Generation. Ex-BASI Board Director. Co-author of the BASI Manual.



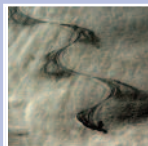
Euan Wright

ISTD (Level 4) and head New Generation coach, Ex-head coach at Interski (Italy). Seasons in Canada, Italy, & France.



Dave Morris

ISTD (Level 4), BASI trainer, Level 4 Race Coach. Owner of Podium Ski. Seasons across the Alps!



Tess Swallow

ISTD (Level 4), BASI Trainer, Seasons in Tignes and Val d'Isere!



Anthony Swallow

ISTD (Level 4), Specialist Bumps Coach. Tignes Ski School Manager. Seasons in Tignes and Val d'Isere!

....and we have loads more awesome trainers... Blair, John,
Jimmy, Jon.....

Unlock Your Potential

The level 2 mini-gap is for BASI level 1 members who want to fast track their level 2 qualification. It is an intense 4 week period consisting of 2 full preparation weeks, and 2 weeks taking the official BASI level 2 Ski Instructor course and exams.

Our goal is to give you the technical knowledge and support you need to help you succeed in the next stage of your instructor career.

Dedicated Coaching

We believe that a major factor behind the satisfaction of our students is our approach to coaching. Our team of experienced instructors find that one of the most satisfying parts of their job is helping students succeed in their chosen career.

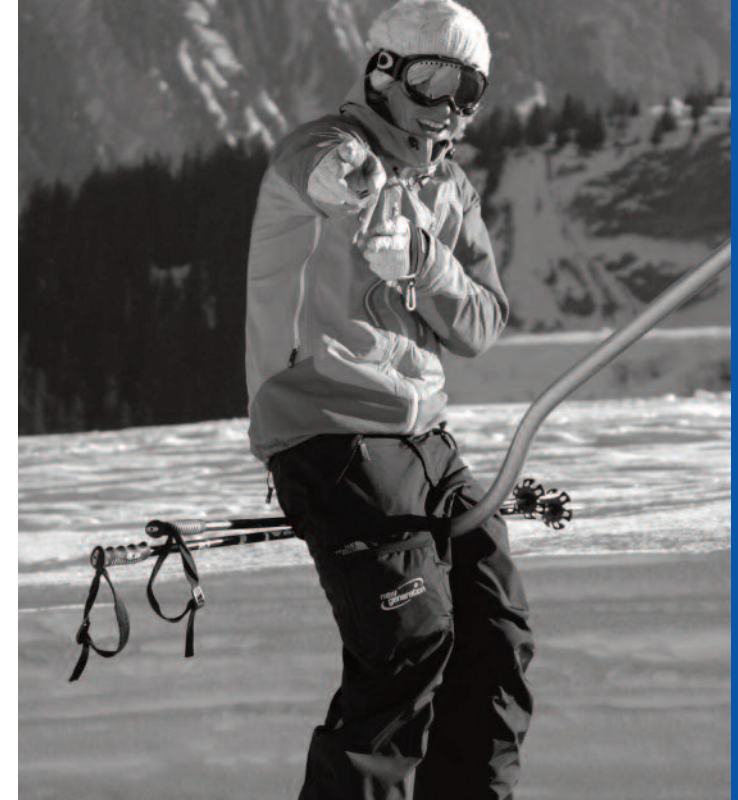
Aside from the formal training programme, you will find that there is always someone available to help you with anything from your own technical skiing to organising your lesson plans. Our goal is to give you the support you need to make you succeed.

Taking care of your future

In joining New Generation you will have the opportunity to become part of our unique pathway through to the Level 4 and beyond.

On successful completion of the Level 2, New Generation has a number of training courses through your pathway to full qualification. We hope this is one step of many!

The final decision you will have to make on full qualification will be which of our 9 Ski Schools you want to make your home. During your final year you will be given unlimited access to the different resort management teams who will be available to meet and talk through your future plans.





Pre-requisites

Before applying for the level 2 mini-gap, students must meet the following criteria:

- Must have completed the BASI level 1 course
- Be able to ski confidently, coping with a variety of conditions and have completed at least 16 weeks on snow
- Ski confidently parallel on black runs, being able to make rhythmical turns close to the fall line at a steady pace
- Be able to ski confidently and in control in off-piste conditions
- Have an understanding of Client Care
- Be 16 years of age or older

Students who are unsure whether or not they are at the necessary standard should ask a qualified BASI member for advice or contact our Instructor Courses Manager Chris David on Tel: +44 (0)7521 162 724 or email: instructorcourses@skinewgen.com

Open Days

We run a number of Open Days at UK Indoor slopes during the summer which gives students an opportunity to ski with one of our coaches to check their level and ask lots of questions!



Check out our Open Day dates on:

www.skinewgen.com/instructor-courses/gap/Instructor_open_days.html

Weeks 1 & 2 - The Training Course, Tignes

The course runs for 5 days each week (Sun - Fri) with 5 hours on-snow each day and evening video feedback sessions. Wednesday is a rest day. There is a maximum of 10 people per group (the same as the BASI Alpine Level 2).

The two first weeks are all about getting you as well prepared as possible for the ensuing 2 BASI course weeks and includes:

Understanding the BASI level 2 course content and student requirements

- Detailed run through of the BASI course and daily structure
- What will be expected of you to pass
- High end ski performance exam requirements
- Central theme ski performance exam requirements
- Teaching sessions and safety exam requirements
- What will the trainer be looking for in your performance

Personal performance development

- Thorough analysis of your current performance
- Identification of performance gaps and specific action plans
- Individual performance development towards BASI level 2 requirements

Weeks 3 & 4, Alpine Level 2, Courchevel

Weeks 3 & 4 of the course are based in Courchevel where you will be signed up for the BASI Alpine Level 2. The Level 2 starts with a Sunday briefing, then a 10 day on-snow training and continuous assessment course.

- Technical skiing (practical). A thorough grounding in the ski instructor technical syllabus (central theme)
- Ski teaching (practical). Training, analysis and practice of teaching skiing using the progression skills from the technical syllabus
- Client care

Theory and off-snow content

- Safety and fitness for skiing
- Communications & Lesson planning
- Technical consolidation & Principles and practice of ski teaching





Outcome & Qualification

Successful students will be able to ski to a competent level, and have the knowledge, ability and understanding to safely teach Alpine skiing up to and including parallel standard on marked pistes. Those who do not reach the required level may be required to re-sit all or part of the course.

Certification and Issue of your Ski Instructor Licence

A licence, which is renewable annually, can only be issued to students who have fulfilled the following conditions:

- Successful completion of the Alpine Level 1 & 2 Instructor Training Courses
- Have completed 70 hours ski school experience with a BASI recognised snowsports school.
- Be a minimum of 18 years old
- Hold a current first aid certificate issued by an organisation recognised by the Health and Safety Executive (the course must be a minimum of two days long)
- Have completed the BASI Child Protection Module
- Have paid the current full BASI membership fee
- Have attended a revalidation/refresher course every year unless they have attended another training course.

Ski School Experience

As an optional extra anyone who completes a New Generation Mini-Gap, can stay on or return for an additional week after completing their course and can book in with us for a week of ski school experience. This will include

- 35 hours ski school experience
- Training Log book and course material
- 20 hours shadowing our top instructors
- 15 hours personal performance clinics including video feedback, designed to help you prepare for all aspects of your BASI Alpine Level 2 Course.
- Signed ski school experience record including a breakdown of areas covered.

The dates for Ski School Experience are:

12 - 16 Dec 2011; 12 - 16 Mar 2012; 26 - 30 Mar 2012 in Courchevel

Accommodation & Food

During your stay with us we want you to be able to concentrate on your skiing which is why we have catered chalet accommodation as part of the course.

Food Package

Being on the mountain all day will ensure that you build up your appetite. To keep you 'fuelled up' we have included a full board food package.

Breakfast: A choice of cereals, bread and preserves, juice.

Afternoon Tea: Homemade Cake, bread and preserves will be available Monday to Friday when you return from skiing.

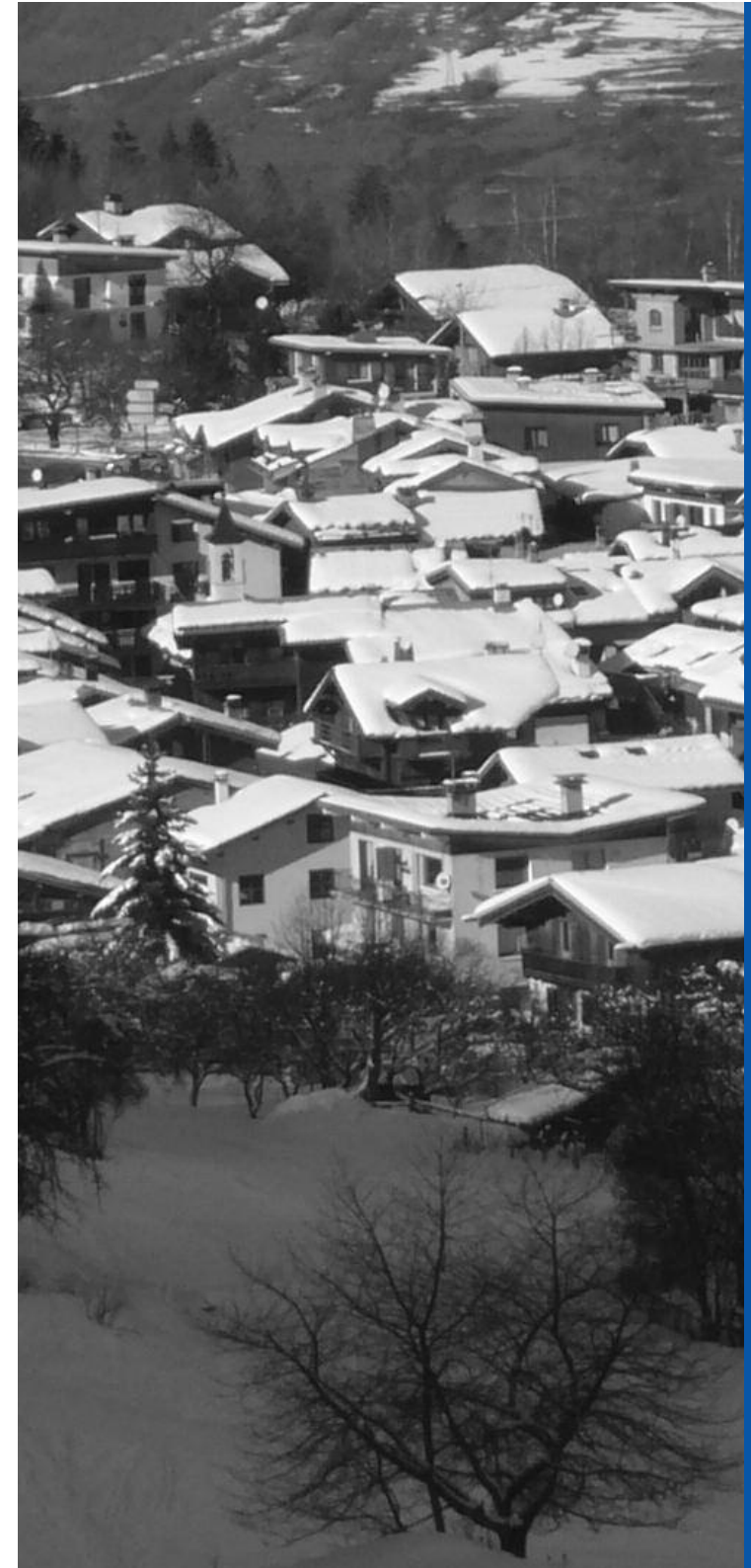
Evening Meal: A filling 2 course dinner

Chalet Staff Day Off

The chalet staff will have a day off (Day TBC), Breakfast will be laid out for you but you will need to make your own arrangements for Dinner. Your instructor will be only too happy to recommend some local restaurants.

The Lounge

The chalets have cosy living rooms where you can kick your boots off and relax. Each lounge is equipped with a TV, DVD, games console (bring your own games) and CD player. Free internet is available in the chalet as well as local bars, cafes and the tourist office. All off-snow lectures will take place in the comfort of your chalet.





Travel to and from the resorts

New Generation arranges for your transfer from Geneva airport. We recommend booking flights (once the course is confirmed) with one of the 'budget airlines' as tickets can be purchased for minimal cost. We organise an airport transfer (from Geneva) on the Saturday of the start and end of the course (This transfer is **included** in the course price).

Insurance



Insurance is compulsory for attending a BASI course and before commencing the course your trainer will check that you are insured.

BASI has a comprehensive insurance package which is well suited to the course. You will be emailed details when you sign up.

Lift Pass

The lift pass is included in the price of the course.

Atomic Skis



Our main ski sponsor, Atomic, has set up an on-line shop for all our students to purchase Atomic skis at a fantastically low price (c. 30-40% off retail price). We give you access to the site when you sign up!

Facebook



We run a dedicated facebook page for all our trainee and instructor team. Please 'Like' our page to access all our updates.

Page Name: 'New Generation Ski an& Snowboard Instructors'

Link: <http://www.facebook.com/pages/New-Generation-Ski-Snowboard-Instructors/227808990585025>

Course Dates and Fees (2011)

To book on the course we require a £500 non-refundable deposit. We will then provide a payment plan so you can pay the rest by instalments in 2011. To book your space please visit our on-line site:

Book On-line at <http://www.nextgentravel.com/instructorcourses/>
(We have a guide to booking online on the next page in this pack)

Course Date: 19th November - 17th December 2011

Course Fee £3495

Flights are not included.

Contact us

Email: instructorcourses@skinewgen.com

Office: 0033 (0) 479 01 03 18

0844 484 3663 (From UK only)

Direct: Chris David 0044 (0) 752 1 162 724

Euan Wright 0033 (0) 684 936 227



Booking instructor courses online



It is easy to book onto our instructor courses. You can book on our secure online system. We now only accept online bookings.

Book Online: <http://www.nextgentravel.com/instructorcourses/> (Copy or type this into your browser)

Stage 1: Select the course you wish to join. e.g. Alpine Level 2 Mini-Gap

Stage 2: Check the date

Stage 3: Enter your name and age in the appropriate boxes. If you are under 18 we will send you a parental consent form by post to fill out.

Please enter your home address in the box provided if this is different to the one you are using for your credit card payment.

Stage 4: Check the lesson details. If you are happy then click 'Go To The Checkout'.

Stage 5: If you are new to the site then under 'New User' register your details. If you already registered then fill out your email and password. Continue to payment.

Complete payment details. Make sure you read the appropriate terms and conditions for your course as there are different t's and c's for different courses. You may be required to send extra paperwork by post - this will be indicated in these.

You must tick the box to show you have read the terms and conditions. Then click **next**.

Stage 6: Check details and confirm your booking by pressing '**click to confirm**'

You will be sent an automatic email confirmation.

On receipt of your email confirmation you are officially booked on the course! We will follow up all bookings with an information pack and a phone call.





Frequently Asked Questions

Can I work after the course?

Yes, well nearly! Once you have passed your Alpine Level 2 and have all the constituent parts you can work in a number of countries around the World. Including: New Zealand, North America and the UK!

I want to do my Alpine Level 3 straight away, is this possible?

There is a big step up from Level 2 to level 3 in terms of experience and technical ability. New Generation offer a seasonal training course (starting in January) for any students who wish to start their training and preparation for the Level 3.

Do you offer training for the next stages of the BASI Instructor Pathway?

Yes, as mentioned above, New Generation offer training for all the next stages of the BASI system.

Can I do the Alpine Level 2 without doing the Mini-Gap?

Yes you can simply sign up to a Level 2 assessment (if you have the required parts i.e. Alpine Level 1). The benefit of the Mini-Gap is that you receive two weeks of training before the assessment weeks to give you the best chance of passing. We also take care of your accommodation, food and lift passes during your stay so you can concentrate on the skiing.

How long does it take to become fully qualified?

This is a question we get asked quite often! On average it takes 3 - 5 years to become fully qualified. It requires a high level of commitment and skill. All through the BASI system you will be given action plans and a very clear understanding of the level you need to be to qualify so you will understand how far you have to go!

Does everyone who does the Alpine Level 2 go on to become an instructor?

No! The Level 1 and Level 2 are brilliant courses in their own right. They offer fantastic value to people who just want to improve their skiing in addition to being the first steps in an instructor's career. A lot of people just do the first stages of the qualifications to have fun!

Terms and Conditions

1. The applicant must have fulfilled all of the course pre-requisites, we may ask for a self assessment questionnaire and that the delegates attend a selection day if deemed necessary.
2. The application will only be accepted and secured provided:
 - a. The application is accompanied by a minimum £500 non-refundable and non-transferable Initial Deposit.
 - b. The booking confirmation is signed and returned
 - c. The applicant accepts these terms and conditions of booking
 - d. The parental consent form is signed by a parent or guardian if the applicant is under 18
3. The remaining installment in respect of your Course must be received in full at the New Generation office by 1st October 2011 (unless otherwise arranged with New Generation).
4. All changes to bookings must be received in writing, by fax, email or letter.
5. All students must be insured for their course.
6. Cancellation – in the event of cancellation by the student neither the deposit or and subsequent installments paid are refundable or transferable.
7. The Course requires a minimum of 5 students to run for the full course duration. In the event that we have less than 5 students we will notify you to confirm the revised course duration.
8. New Generation strongly recommends that all members embarking upon New Generation courses take appropriate insurance which covers both cancellation and curtailment.
9. New Generation will refund appropriate monies if the decision is made by New Generation to cancel all or part of the Training Course.
10. No monies will be refunded by New Generation in the event of an injury sustained whilst participating in the course, where injury leads to curtailment of the course; in this instance it is necessary to make an insurance claim.
11. If the venue of the course is adversely affected by snow, weather or any other circumstances, New Generation reserves the right to cancel the course or alter the venue without prior notice or warning.
12. New Generation reserves the right to refuse training to any applicant who, in the opinion of New Generation is unsuitable for Snowsport Instructor training.
13. Any student found under the influence of alcohol or drugs during course contact time will be removed from the course with no refund.
14. In the event that an applicant is refused training or removed from the course on the basis of paragraph 13 and/or 15 no monies will be refunded.
15. New Generation expects all students to behave in a professional manner at all times. Any student who behaves in a way which may cause damage to New Generation or its reputation shall be removed from the course.
15. You agree that except for death or personal injury arising through the negligence of New Generation, New Generation shall not be liable for any loss or damage arising whether in respect of death, bodily injury, and illness suffered or contracted, loss, costs, damages or expenses incurred.
16. It is the individual student's responsibility to ensure that all accommodation, transport and any other facilities provided by New Generation or their employees or agents, are treated with respect and consideration.
17. New Generation will not be responsible for any damage caused by a student or students. Students will be held liable for any costs incurred in such a way and will agree to settle any costs immediately.
18. As an applicant for a New Generation course, whether applying by telephone, fax, email or letter you acknowledge and agree that these terms and conditions shall apply to your application/participation in the course.