

The OFFICIAL BASI GAP Courses

Courchevel / Méribel / La Tania
2012

Courses run by:



Please read the terms and conditions before signing up to the course



The OFFICIAL

BASI Training Centre in the Three Valleys



Includes
North Face
Ski Jacket



Please think before you print



BASI & The Professional Coaching Team

BASI is the British Association of Snowsport Instructors. BASI offers 3 GAP courses in France (Val d'Isere, Courchevel and Meribel).

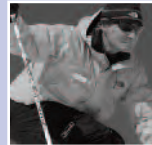
New Generation runs the Official BASI GAP courses in the 3 Valleys. New Generation is a British run Ski School set up by myself (Tom) and 3 other BASI trainers (Warren, Ali and Richard) in 1998.

Since then we have recruited some of the best British coaches to work alongside us and help to train the future personalities of British ski instruction. In 2011 we had over 15 BASI trainers and instructors working with New Generation. Here are of some the team that will be training you.



Tom Saxlund

BASI Level 4 and BASI Trainer, Managing Director and owner of New Generation Ex-BASI Board Director. Seasons in Portes Du Soleil, Verbier, La Clusaz, Meribel and Courchevel.



Euan Wright

BASI Level 4 and head New Generation coach, Ex-head coach at Interski (Italy) Seasons in Whistler/ Blackcomb, Les Deux Alpes, Aosta Valley, Courchevel.



Chris David

Former British Freestyle Ski Team member & Current Performance Manager for the British Freestyle Team. Instructor Courses Manager for New Generation. Founder of Altitude Ski School in Verbier.



John Gass

BASI Level 4, instructor trainer and GAP Off-hill Manager for New Generation. Seasons in Verbier, Cordrona (NZ) and Courchevel.



The OFFICIAL

BASI Training Centre in the Three Valleys

Welcome to the New Generation GAP Course

Why join the New Generation Gap Course?	4
Why choose New Generation over other Gap providers?	5
Introduction to the course	6
Pre-requisites and pre-selection	7
The Gap Course Programme	8 - 11
<i>(Individual Development Assistance programme)</i>	<i>(9)</i>
Catered Chalet Accommodation	12
Travel and Insurance	13
Course choice: Courchevel, Meribel & La Tania	14
Upgrade Your Gap	15
The details	16 - 17
How to book for 2012	18
Booking form	19
Terms and conditions	20



Why join the New Generation Course?

BASI European Business Partner

New Generation is the official BASI (British Association of Snowsport Instructors) EBP in the Trois Vallees. New Generation runs a number of courses (after the GAP) that can help you qualify all the way through the BASI system. You could even end up working for the New Generation Ski School in one of the Alps' top resorts!

The Biggest Ski Area in The World!

Meribel & Courchevel are huge ski areas in themselves as well as being part of the Trois Vallees Ski area - the largest ski area in the world. The terrain varies from beautifully groomed pistes (perfect for learning to teach on) to steep couloirs and challenging off-piste runs.

The No.1 Ski School

New Generation was voted No.1 Ski School by 'Which Books' and the Snow Awards. GAP students have the opportunity to work and learn alongside our instructors, experiencing the day to day life of the No.1 ski school.

Catered Chalet Accommodation

Every year our students list 'catered chalet accommodation' as one of the key factors in their choice of our course. After a hard day's skiing there is nothing quite like coming back to a ready cooked three course meal!

Your first career step?

Attending the GAP course can be the first step of your instructor career, or, you can simply experience 10 weeks of wonderful skiing in one of the top resorts in the world with the No.1 Ski school - your choice...

And... don't forget your free freeride jacket

Every student receives a fantastic freeride jacket (A Black Decagon) from The North Face.

Why choose New Generation over other GAP providers?

New Generation is the Official Training Centre for BASI (British Association of Snowsports Instructors) in the Trois Vallees.

The course is run by BASI instructors and examiners which ensures you received the very best training for the BASI qualifications.

New Generation is a Ski School & Training Centre

New Generation is not a tour operator. The training you receive is from people who live and work in the industry. We do not contract out our training, we are a working ski school and BASI training centre.

All students stay in chalet accommodation

We aim to immerse you in your training, which is why we provide fully catered chalet accommodation (Other courses spread students across the resort in apartments and provide food vouchers to eat in local restaurants).

No hidden extra costs

We passionately want all our students to qualify and progress through the BASI system. The New Generation GAP programme includes your BASI course fees, first aid courses and avalanche awareness courses (Many other operators exclude these course fees).

Working after the course

New Generation is one of the best known ski schools in the world. We have an extensive network of contacts to help you find work after the course. Following qualification you are guaranteed work (Each year we organise a bus to take students over to Italy for paid work!).



Introduction to the course

The New Generation GAP course is great fun, yet hard work. Whilst attending the GAP course you are in a snowsport environment 100% of the time. The intention is for all students to be immersed in the culture and way of life of a snowsport instructor and to be totally focused on the outcome.

The GAP course is a fantastic opportunity to obtain a British ski instructor qualification in just ten weeks. All of our students take their BASI Ski Instructor course and exams as part of the GAP course.

Our GAP courses are based in Courchevel and Méribel, part of the Trois Vallées - The world's biggest ski area.

All students receive expert coaching from New Generation's top BASI Trainers. As well as on-snow coaching, training includes evening sessions and use of video. Each student is assigned a mentor who will look after the students on and off the snow, ensuring a GAP experience they will remember for life.

Students have ample opportunity to experience the social side of ski life. Past events have included lugeing, ice hockey, fondue evenings, and of course several nights out sampling the delights of Courchevel and Méribel night life. A visit to Dick's Tea Bar and the Rond Point are an absolute must.

Check us out as we enjoy the snow!



<http://tinyurl.com/3abvr4f>



<http://tinyurl.com/66bocvu>



<http://tinyurl.com/5rs189m>



Are you at the right standard for the course?

The BASI standard of entry to the GAP course is:

- Be able to ski parallel confidently, coping with a variety of conditions, and have completed a number of weeks skiing on snow.
- Ski parallel confidently on black runs, being able to make rhythmical turns close to the fall line at a steady pace.
- Be confident to ski in control in off-piste conditions.

You may be asked to attend a pre-assessment to ensure your skiing is at the required level before the course starts. Pre-assessments take place as part of our open days at the Snozones in the UK. If you would like to attend please contact New Generation on the details below.



The Gap Course Programme

The Ski Show Social (Oct 2011)

All GAP students and their parents are invited to an informal gathering at the ski show. This is the perfect opportunity to ask those final questions and to meet fellow students before coming out to France.

Week 1:

Personal Performance Course (Monday to Friday)

An exciting first week focusing on helping students understand and develop their skiing. Off-piste, bumps, steeps and piste techniques are all part of this course. At the end of the week students receive a dynamic action plan to help them continue improving their performance. During this week students will be introduced to our IDA (Individual development Assistance programme) - Details can be found on the next page.

Week 2:

BASI Alpine Level 1 Course

This is a 5 day on-snow BASI training and assessment course in which the following subjects are covered and assessed:

- Skiing safely.
- Planning, conducting and evaluating an instructing session.
- Participation in an accident and emergency activity.
- Knowledge and understanding of how to improve personal skiing and instructing performance.
- BASI methodology and progressions (Central Theme) and beyond.
- The Skier's Code of Conduct.
- The Principles of Ski Teaching.
- The Structure of Snowsports in the UK.
- The Roles of Snowsport Agencies in the UK.
- Marketing and Promoting Snowsports in the UK.
- Dealing with accidents and emergencies.

All course materials are included



*James (Gap student)
in the North Face Decagon jacket*



Individual Development Assistance (IDA)

AT BASIGAP we have created a programme which works alongside your on-snow training. Through our years of experience we have identified specific areas which will assist in your development. The IDA programme is aimed at helping the individual to improve quickly and effectively.

Learner Preference Profile:

We all learn differently. Effective learning involves a range of different learning activities. By understanding your own learner preferences you will be so much more effective in applying the course programme to your own skiing development.

Psychological Performance Training:

Your performance is increased when you are in the correct mental zone. Learning how to manage this is a vital part of your progression towards success.

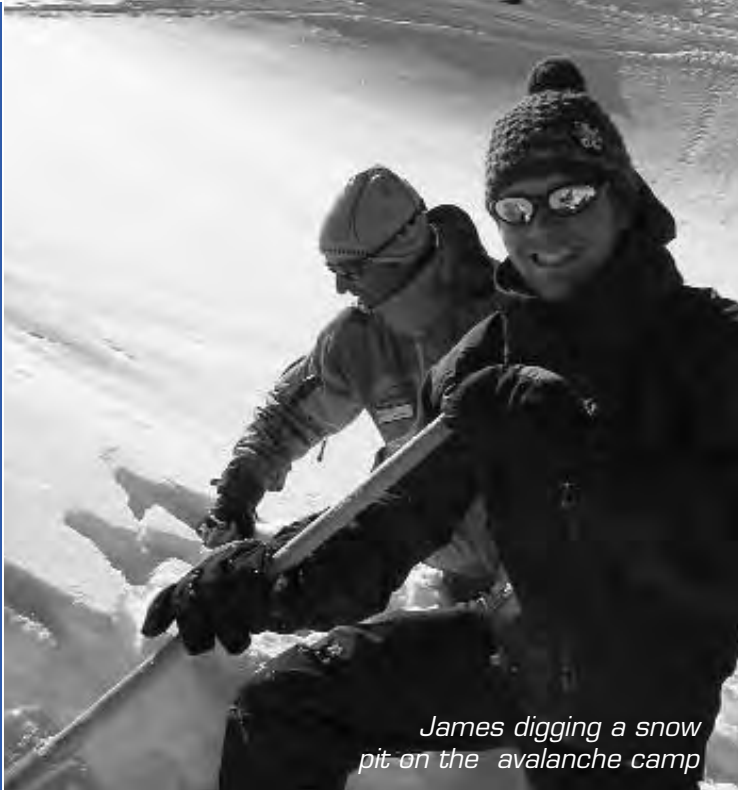
Boot fitting and Ski Testing:

If you need ski boots, we can arrange an appointment for you at one of the **ellis brigham** (our sponsor) UK stores where a team of experienced boot fitters are on hand to ensure that you are in the correct boots with an accurate and precise fit. Test facilities in the Snozones are available to allow you to test skis prior to purchase with expert advice on hand. Our ski sponsor, Atomic, offers reduced price skis to all of our trainees.

Skier Alignment:

Our experts are on hand to ensure that you are standing on your skis in the most efficient stance possible. If necessary corrections can be made in your boots to aid your strength and agility.





James digging a snow pit on the avalanche camp



It is a wee bit nippie up here

Week 3 to 8: Ski School Shadowing & Technical Courses



Ski School shadowing with New Generation

You will shadow lessons at different levels with our top instructors, learning the secrets of great teaching and actually getting involved in the lessons. On average students will shadow 12 hours each week during this period. Students keep a log book so that ideas can be incorporated into future lesson plans.

Personal Performance Clinics

Each week students receive ski coaching from our top New Generation instructors and BASI trainers. The clinics are designed to improve technical performance by individual coaching and group exercises, helping students to develop an understanding of their own skiing.

Ensuring Your improvement

Each student is allocated a Mentor who is available to provide advice, encouragement and help with any skiing problems that the student may encounter during the course. The mentor will help the student to structure their own practice time ensuring consistent improvement throughout the course.

First Aid Course

Two days of practical first aid training with a British First Aid expert. Successful assessment leads to a BASI recognised Professional First Aid qualification.

Mountain Safety Course

An off-piste course run by a BASI trainer during which students learn about avalanche awareness, using transceivers, snowpit analysis and how to be safe in the mountains.

Child Protection Module

An essential course for anyone working with children. Completing the child protection module is necessary for qualification as a British ski instructor.

Race Training

Experience the thrill of gate skiing. Our top coaches will give you an insight into the world of racing. The skills you learn will help you with your overall performance.

Injury Prevention

We work closely with the local British Physios who do a seminar on injury prevention as well as being on hand to help with any injuries or sports massage requirements (at reduced rates).

Careers Seminar

Advice from experienced snowsports instructors on the options for moving forward into a career in snowsports.

Recruitment Service

Links to ski schools worldwide to help you find employment and teaching placements. We can provide references and help with CV's. On successful completion of the course we can arrange for students to work in a ski school for the week - ask our course advisors for more details.

Weeks 9 to 10: BASI Alpine Level 2 Course

The BASI course consists of two weeks of continual training and assessment. The 10 weeks of work on students' action plans, shadowing experience and help from the mentors throughout the GAP course will help drive students to reach their final goals.

On successful qualification, students will gain the BASI Ski Instructor Award. The content of the course includes:

- Technical Skiing (practical)
- Ski Teaching (practical)
- Training analysis and practice of teaching skiing using the progression skills from the technical syllabus.
- Client care
- Theory and off-snow content
- Safety and fitness for Skiing
- Communications
- Lesson planning
- Technical consolidation

BIG CELEBRATION PARTY & AWARDS



Accommodation & Food

We know that one of the most important parts of creating a successful GAP course is the accommodation and food. If you have a comfortable bed and a good meal to go home to then this enables you to concentrate on your skiing. Therefore, we have arranged catered chalet accommodation on both our GAP courses.

The Lounge

Both chalets have cosy living rooms where you can kick your boots off and relax. Each lounge is equipped with a TV, DVD, Playstation (bring your own games) and CD player. Free internet is available in local bars, cafes and the tourist office. All off-snow lectures will take place in the comfort of your chalet.

Food Package

Being on the mountain all day will ensure that you build up your appetite. To keep you 'fuelled up' we have included a full board food package.

- | | |
|----------------|---|
| Breakfast: | 7 days a week including choice of cereals, bread and preserves, juice. A light cooked option is available Mon to Fri. |
| Packed Lunch: | Filled baguette and chocolate bar/fruit, will be available for you to take out on the slopes with you Monday to Friday. |
| Afternoon Tea: | Homemade Cake, bread and preserves will be available Monday to Friday when you return from skiing. |
| Evening Meal: | A filling 2 course dinner Sunday - Friday with themed nights (Local Savoyard, Indian etc..) throughout your stay. |

Chalet Staff Day Off

The chalet staff will have Saturdays off, Breakfast will be laid out for you but you will need to make your own arrangements for Dinner. Your instructors will be only too happy to recommend some local restaurants.

Looking down on the Courchevel GAP chalet in Le Praz. You can ski to within 2 minutes walk of the chalet

Méribel, Courchevel or La Tania?

All 3 of our resorts offer an abundance of skiing and night life.
The choice is yours.

Courchevel

The 3 Valleys ski area in Savoie, France is the biggest in the world. With over 200 lifts and 600km of pistes, it's easy to understand the appeal of this ski mecca. The resorts that form Courchevel sit at one end of the 3 Valleys area and have some of the best skiing.

From Courchevel you can access mogulfields, smooth race pistes, glacier and couloir skiing. Courchevel offers door-to-door skiing with easy access to a wide variety of terrain - ideal training ground to improve your performance and have a fantastic time skiing.

The chalet is located in Courchevel Le Praz within a couple of minutes of the lift station. Le Praz is a lively but affordable part of Courchevel and is therefore home to a community of seasonnaires and instructors! Local nightlife includes the famous Sports Bar which hosts regular band nights and all major sporting events.

Méribel

Méribel is at the centre of the Trois Vallées Ski area. This means there is excellent access to not only Méribel's own extensive skiing, but also to the neighbouring valleys of Courchevel, Val Thorens/Les Menuires and Les Orelles.

The chalet is located in Méribel Les Allues. The chalet is within a few minutes walk of the main Olympic bubble. Similar to Le Praz, Les Allues is a favourite with seasonnaires.

La Tania

Developed for the Olympics, La Tania nestles between Meribel and Courchevel, offering fantastic access to the slopes whilst maintaining it's village characteristics and sense of community.

Everything is within reach in La Tania and we guarantee you will know everyone by the end of your course! A great community atmosphere.



Travel to and from the resorts

New Generation arranges for your transfer from Geneva airport. We recommend booking flights well in advance with one of the 'budget airlines' as tickets can be purchased for minimal cost. We can help students with their flight bookings and will try and co-ordinate students flying out at the same time. We organise an airport transfer (from Geneva) on the Saturday of the start and end of the course (This transfer is **included** in the course price).

Insurance



Insurance is compulsory for attending a BASI course and before commencing the course your trainer will check that you are insured.

BASI has a comprehensive insurance package which is well suited to the course. You will be emailed details when you sign up.

GAP Jacket



We provide GAP jackets for all students. One of the main reasons for this is feedback from students who wanted to be clearly identified as trainees with New Generation - especially when they were shadowing ski school lessons. It will be compulsory to wear the jackets when taking part in shadowing.

Atomic Skis



Our main ski sponsor, Atomic, has set up an on-line shop for all our students to purchase Atomic skis at a fantastically low price (c. 30-40% off retail price). We give you access to the site when you sign up!

Facebook

We run a dedicated facebook group for everyone signing up to the course so you get to know each other before you hit the slopes.



Upgrade Your GAP

The upgrade package includes on and off snow activities that offer the opportunity to fully experience life in the Savoie region without breaking the bank. *(NB: The Upgrade Package is subject to sign-up numbers and content may change).*

Overnight trip to a mountain refuge

Probably the most popular trip on last year's course. Spend an evening in a mountain hut and enjoy the true mountain experience.

Parapenting

Get a bird's eye view of the Trois Vallee's with your skis still strapped to your feet.

Olympic bobsleigh

Experience the thrill of hurtling down an icy shoot with 3 of your friends at speeds that really shouldn't be allowed. Heart in your mouth time but not one you will forget.

3 Additional Ski Clinics

Park and Pipe clinic; Freeride clinic; Bumps clinic

Savoyard Evening

Sample the delights of the local savoyard cuisine. Cheese, meat, ham, potatoes and Genepi (!) will definitely be on the menu.

Torchlight descent

Enjoy drinks in our ice bar then ski down in the dark with only a flaming torch to guide you is a once in a life time experience.

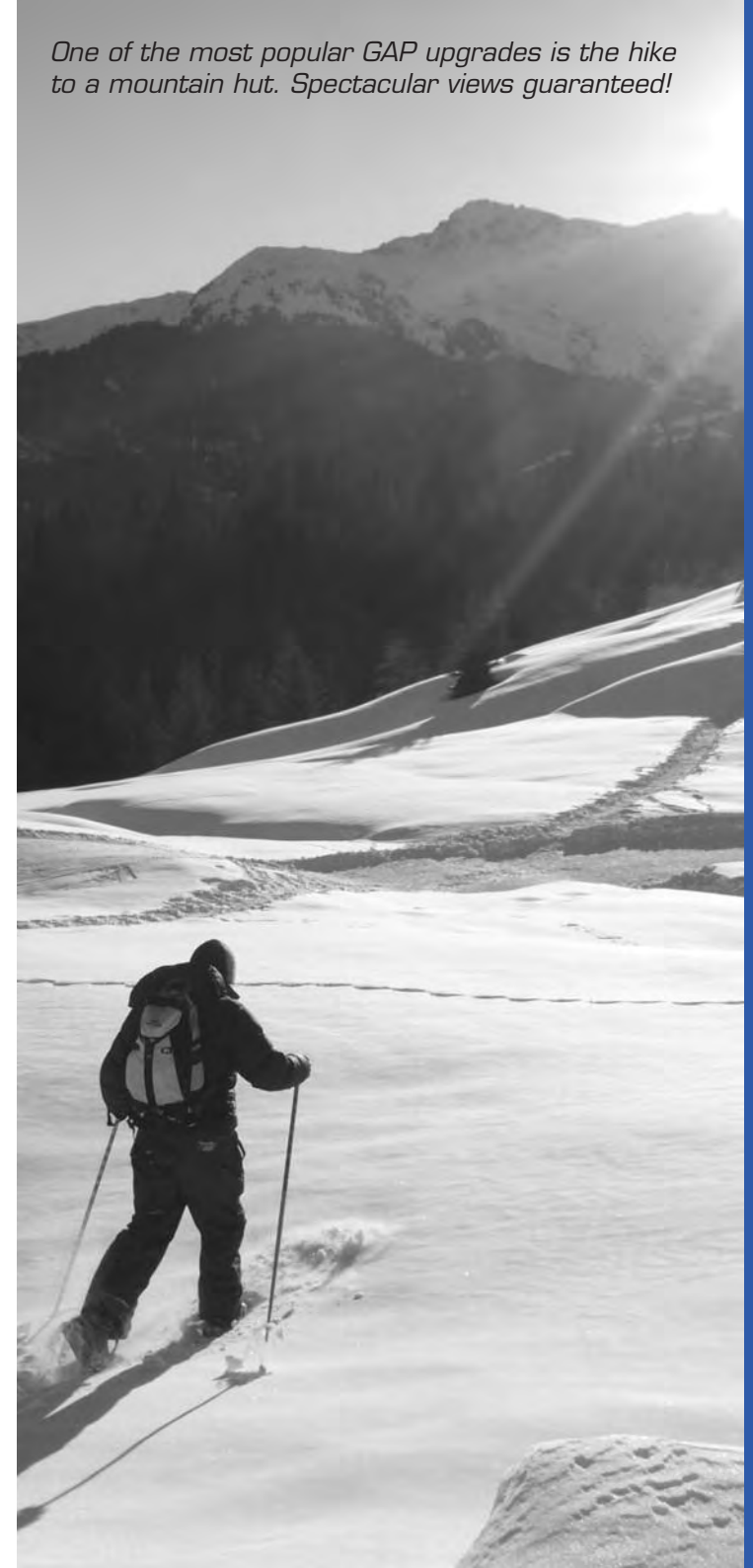
Ice Hockey Match

Ice hockey is fast and violent. Don't worry - you won't be playing - just watching the pro's at work will get the adrenaline going!

Paradiski Trip

Visit five resorts in one day and enjoy hours of skiing on the Paradiski trip

One of the most popular GAP upgrades is the hike to a mountain hut. Spectacular views guaranteed!





New Generation BASI GAP Course 2012

BASI Course price: £7,595

Courchevel, La Tania & Meribel

10 weeks - Sat 7th January - Sat 17th March 2012

Included:

[Unique Chalet Style Accommodation & Food](#)

A season's lift Pass (valid December to end of April)

Airport Transfers

Personal Performance Training (total 66 hours)

Shadowing and Ski school experience (up to 70 hours)

Video analysis and assessment

BASI Associate Membership

BASI Alpine and Generic Manual

All other course materials

[BASI Alpine Level 1 \(5 days\)](#)

[BASI Alpine Level 2 \(10 days\)](#)

BASI approved First aid course (2 days)

Child Protection Module

Avalanche Safety Course

Ski Technician Training

Race Training

Injury Prevention

Shadowing and Training Log Book

Gap Jacket

Mentor to help with Action Plans and to help structure practice time

Resort support team to help in emergencies

Careers Advice Seminar

Recruitment Service - help with CV's, provide references, teaching placements; link with [Interski](#) (Italy) to work after the course

Welcome Drinks

End of Course Party

New Generation Course Upgrade Package

An optional package for those people who want to experience more from their stay

Cost £395 (TBC)

Park and Pipe, Freeride, Bumps clinics
Olympic Bobsleigh, Savoyard Evening
Torchlight descent, Ice Hockey Match
Overnight trip to a mountain refuge
Day trip to Paradiski (Includes Les Arcs and La Plagne)

(Events subject to sign-up numbers and may change)

After The GAP (18th - 24th March)

A one week course for those interested in moving onto the next stage of the BASI instructor qualifications - Alpine Level 3 (ISIA)

Cost £495 (TBC), 18th - 24th March

Accommodation & Food (as detailed for GAP course above)
Intro to the Alpine Level 3 course
Evening lectures to introduce syllabus
5 x 3 hour on-snow sessions
Intro to Teacher Tech, 4 Strands (2 sessions)
Intro to Teacher Teaching
Intro to APC
Intro to Off-piste Mountain Safety
Final Action Plan for the Alpine Level 3

Freestyle Camp (25th - 31st March 2012)

An optional package for students who want to develop their freestyle skills.

A week of coaching with Nordica Pro Freestylers.

Cost £495

Accommodation & Food
Freestyle coaching



James, George and Sarah (Gap student) enjoying the torchlight descent



Nikki and Lee



How to book for 2012

To book your place on one of the GAP courses please visit our on-line booking system. Our 2012 courses are LIVE on-line.

An initial £500 deposit is required to reserve your space.

<http://www.nextgentravel.com/instructorcourses/>

We will then provide a payment plan so you can pay the rest by instalments.

If you have any questions please contact our office:

Opening Times (GMT)

Summer	Mon - Fri 08:30 - 12:30
September	Mon - Fri 08:30 - 16:00
December	All Week 07:30 -18:00

Email: instructorcourses@skinewgen.com

Telephone: 07521162724
0033 479 01 03 18
0844 484 3663 (from UK only)

Still got more questions?

Call us any time: Chris David 0044 752 1 162 724

Check out our website: www.skinewgen.com

Come to a Free open day: Dates all through the summer at UK indoor slopes - contact us for details.

Terms and Conditions

1. The applicant must have fulfilled all of the course pre-requisites, including a self assessment questionnaire and attending a selection day if deemed necessary.
 2. The application will only be accepted and secured provided:
 - a) The application is accompanied by a minimum £500 non-refundable and non-transferable Initial Deposit
 - b) The booking confirmation is signed and returned
 - c) The applicant accepts these terms and conditions of booking
 - d) The parental consent form is signed by a parent or guardian if the applicant is under 18
 3. The second instalment of £1500 in respect of your Gap Course must be received in full at the New Generation office by 1st August 2011.
 4. The balance of your Gap Course fee must be received in full at the New Generation office by 1st October 2011.
 5. All changes to bookings must be received in writing, by fax, email or letter.
 6. All students must be insured for their Gap course.
 7. Cancellation – in the event of cancellation by the student neither the deposit or and subsequent instalments paid are refundable or transferable.
 8. The After the GAP Alpine Level 3 Course requires a minimum of 5 students to run.
 9. The GAP Upgrade content is subject change in content.
 10. All students will be provided with a GAP Jacket which they will be required to wear (clean) when taking part in ski school shadowing. A sufficient number of Jackets have been ordered but if sizes are not available New Generation reserves the right to provide a similar alternative jacket.
 11. New Generation reserves the right to amend advertised content and dates of the course up to 6 months before the start date. Any modifications will be communicated via email or letter by the 8th July 2011.
- BASI and New Generation strongly recommend that all members embarking upon a BASI course take appropriate insurance which covers both cancellation and curtailment.*
12. New Generation will refund appropriate monies if the decision is made by New Generation or BASI to cancel all or part of a Gap Training Course.
 13. No monies will be refunded by New Generation in the event of an injury sustained whilst participating in the Gap course, where injury leads to curtailment of the course; in this instance it is necessary to make an insurance claim.
 14. If the venue of the course is adversely affected by snow, weather or any other circumstances, New Generation reserves the right to cancel the course or alter the venue without prior notice or warning.
 15. BASI and New Generation reserve the right to refuse training to any applicant who, in the opinion of the BASI and New Generation is unsuitable for Snowsport Instructor training.
 16. Any student found under the influence of alcohol or drugs during course contact time will be removed from the course with no refund.
 17. In the event that an applicant is refused training on the basis of paragraph 13, no monies will be refunded.
 18. You agree that except for death or personal injury arising through the negligence of BASI or New Generation, BASI and New Generation shall not be liable for any loss or damage arising whether in respect of death, bodily injury, illness suffered or contracted, loss, costs, damages or expenses incurred.
 19. It is the individual student's responsibility to ensure that all accommodation, transport and any other facilities provided by BASI or New Generation or their employees or agents, are treated with respect and consideration.
 20. New Generation and BASI will not be responsible for any damage caused by a student or students. Students will be held liable for any costs incurred in such a way and will agree to settle any costs immediately.
 21. As an applicant for a BASI and New Generation Gap course, whether applying by telephone, fax, email or letter you agree to abide by these conditions.

THE GAP CALENDAR



Sample

January 2010 - Grp1

Sample

Monday

Tuesday

Wednesday

Thursday

Friday

Saturday

Sunday

					1st	2nd	3rd Welcome Meeting 5.30pm Le Praz
4th Personal Performance 9.15 - 4.15pm Trainer Meets group in chalet	5th Ski Servicing Talk: In chalet from 5.30pm	6th	7th	8th →	9th First Aid All day in chalet, 9am - 6pm	10th Pre-Course Meeting in Chalet 6pm	→
11th Alpine Level 1	12th	13th	14th	15th →	16th	17th Shadowing Meeting in Chalet 6pm. PP 2 - 4:30pm	→
18th Shadowing 2hrs per day PP 2 - 4:30pm	19th PP 2 - 4:30pm →	20th	21st	22nd →	23rd	24th	→
					Upgrade: Savoyard Meal	Upgrade: Freeride Clinic	Upgrade: Freestyle Clinic
25th Shadowing 2hrs per day	26th Upgrade: Torchlight Descent	27th PP 2 - 4.30pm →	28th	29th →	30th	31st	→

Note: Jon Gass is taking Personal Performance (PP) 17th - 19th Jan as Jason is away

February 2010 - Grp2

Sample

Monday	Tuesday	Wednesday	Thursday	Friday	Saturday	Sunday
1st No Shadowing	2nd	3rd PP 2 - 5pm	4th	5th	6th	7th
8th Shadowing 4hrs per day Upgrade: Olympic Bobsleigh	9th	10th	11th	12th	13th Mid-course Assessment Upgrade: Parapenting	14th Upgrade: Parapenting
15th Shadowing 4hrs per day	16th	17th	18th	19th	20th Upgrade: Refuge Night	21st
22nd Shadowing 2hrs per day PP 2 - 5pm	23rd	24th Upgrade: Bumps Clinic	25th	26th	27th Upgrade: La Plagne Tour	28th

March 2010 - Grp3

Sample

Monday	Tuesday	Wednesday	Thursday	Friday	Saturday	Sunday
1st Alpine Level 2	2nd	3rd	4th	5th	6th	7th
8th Alpine Level 2	9th	10th	11th	12th Gap Awards and Celebrations 7pm	13th Fly Home	14th
15th ISIA Week 'After The Gap'	16th	17th	18th	19th	20th	21st
22nd	23rd	24th	25th	26th	27th	28th
29th	30th	31st				